

CERTIFICATE OF LOCATION OF GOVERNMENT CORNER

EAST QUARTER Corner of Section 6, Township 105 N, Range 42 W, 5th P.M.

STATE OF MINNESOTA, County of MURRAY

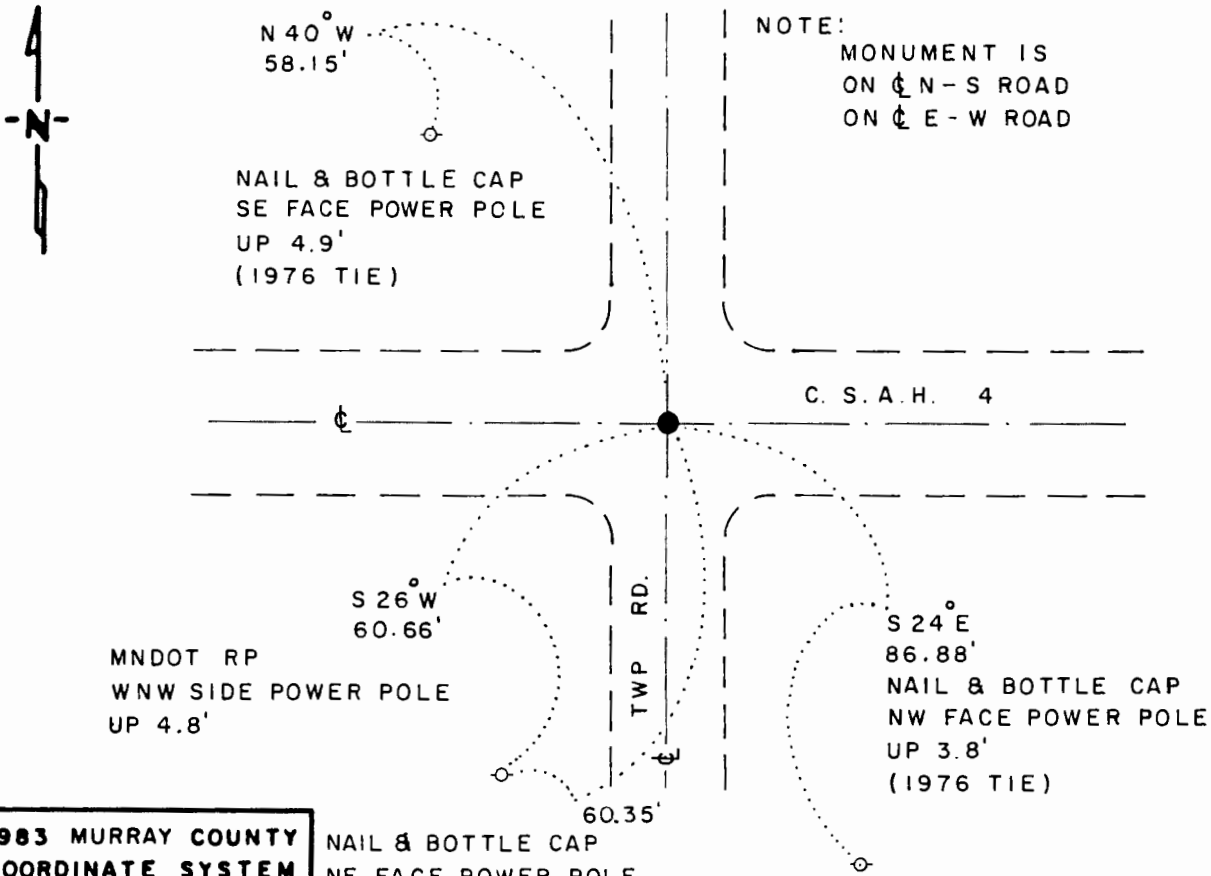
At the corner location shown on the sketch

On 7-12-91 found a 3/8" IRON ROD, FLUSH
DATE

left monument as found, lowered monument, removed monument (explain)

On _____ placed a _____
DATE

SKETCH OF REFERENCE TIES



1983 MURRAY COUNTY
COORDINATE SYSTEM
N = 129,347.684
E = 458,492.172

NAIL & BOTTLE CAP
NE FACE POWER POLE
UP 3.6' (1976 TIE)

BEARINGS OBSERVED WITH COMPASS

Statement of evidence relative to this corner location is on back of page

J.B.M. 7-9-91
WMA 12.00.00.01

I hereby certify that this document and the data contained herein was prepared by me or under my direct supervision.

Bruce W. Shipp
SIGNATURE

8-12-91
DATE

Registration No. 17003

- Land Surveyor, Professional Engineer
- County Surveyor, County Engineer

OFFICE OF THE COUNTY RECORDER

County of MURRAY

I hereby certify that this document was filed in the Co. Recorders office at _____ M. on the _____ day of AUG 15 1991 A.D., 19 _____

County Recorder James V. Johnson

By _____, Deputy

DOCUMENT NO. _____

The DNR Bureau of Engineering contacted the following for survey information:

Mn Secretary of State's Office
Murray County Recorder's Office and Highway Engineer's Office
Mn/DOT Office in Willmar
Mn/DOT Office in St. Paul
Sioux Engineering of Windom
Sioux Engineering of Tyler
Madsen Land Surveying of Fairmont
Madsen Land Surveying of Worthington
Rieke Carroll Muller Associates of Gaylord

- 1861 U.S. General Land Office notes obtained from the Secretary of State's Office show the corner marked with a post in a mound with trench and pits as per instructions.
- 1900 Surveyor's Record Book A, page 101, obtained from the County Recorder's Office contains a survey by J. W. Woolstencraft. This survey is also contained in a Surveyor's Record Book obtained from the County Highway Engineer's Office. Survey shows a stone in grade at corner but does not indicate if found or set. The corner is shown:
2633.0 feet from a stone at the center of Section 6
- 1900 The plat of CHANDLER CEMETERY by J. W. Woolstencraft obtained from the County Recorder's Office shows the center of Section 6 and the sixteenth corner west of it 1320.0 feet apart. Plat does not indicate how the center of Section 6 was determined and a description of a monument at its location is not given.
- 1946 A plan sheet for County State Aid Highway Number 4 obtained from the County Highway Engineer's Office shows a symbol for a monument at corner but does not indicate what was found or set. The corner is shown:
at Station 51+24.9
at the intersection of roads north, south, east and west
2633.7 feet from the center of Section 6
A symbol for a monument is also shown at the center of Section 6 but a description of what was found or set is not given. The center of Section 6 is shown to be:
at POT Station 24+91.2
in a 2 foot cut section
- Date A page in a Surveyor's Record Book obtained from the County Highway not legible Engineer's Office shows that a concrete monument was found down 0.8 of a foot at corner and a steel rebar was set over it. The following ties are shown to corner:
bottle cap in corner post, southeast
bottle cap in power pole, southwest, 56.65 feet
bottle cap in power pole, northwest, 58.78 feet
- 1956 A page in a Surveyor's Record Book obtained from the County Highway Engineer's Office shows a concrete stone at corner but does not indicate if found or set. The following ties are shown to corner:
bottle cap in power pole, southwest, 60.35 feet
bottle cap in corner post, southeast, 58.8 feet
A concrete stone is also shown at the center of Section 6 but does not indicate if found or set.

1976 A page in a Surveyor's Record Book obtained from the County Highway Engineer's Office shows that the concrete stone was found at corner. The following ties are shown to corner:

bottle cap in power pole, southwest, 60.35 feet

bottle cap in power pole, southeast, 86.90 feet

bottle cap in power pole, northwest, 58.18 feet

The concrete stone at the center of Section 6 was also found.

1991 June, DNR Bureau of Engineering found a 3/8" diameter iron rod at corner. Searched for and found record ties as shown on sketch of reference ties. Did not excavate for concrete stone because the record tie distances to the iron rod are within .03 of a foot. The iron rod was found to be:

2633.55 feet from an iron rod found in the area of the center of
Section 6

2561.64 feet (2574.00' GLO) from the northeast corner of Section 6

Analysis of the above information led the DNR Bureau of Engineering to conclude that the found iron rod marks the location of the corner.